



## The Coronado Model



The Coronado encapsulates an exquisite example of the Pacific Palisades lifestyle. A mixture of sophistication and serenity, this open-concept, 4 bedrooms plus a flexible study, 4 full-baths and 1 half-bath, 3-car garage floor plan makes the perfect everyday getaway for your family.



## Area Summary

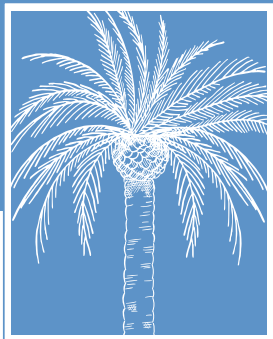
Living A/C	2,796
2nd Floor A/C	1,516
<b>Total A/C</b>	<b>4,312</b>
Covered Entry	54
Garage	865
Covered Lanais	754
<b>Grand Total</b>	<b>5,985</b>

## Dimensions

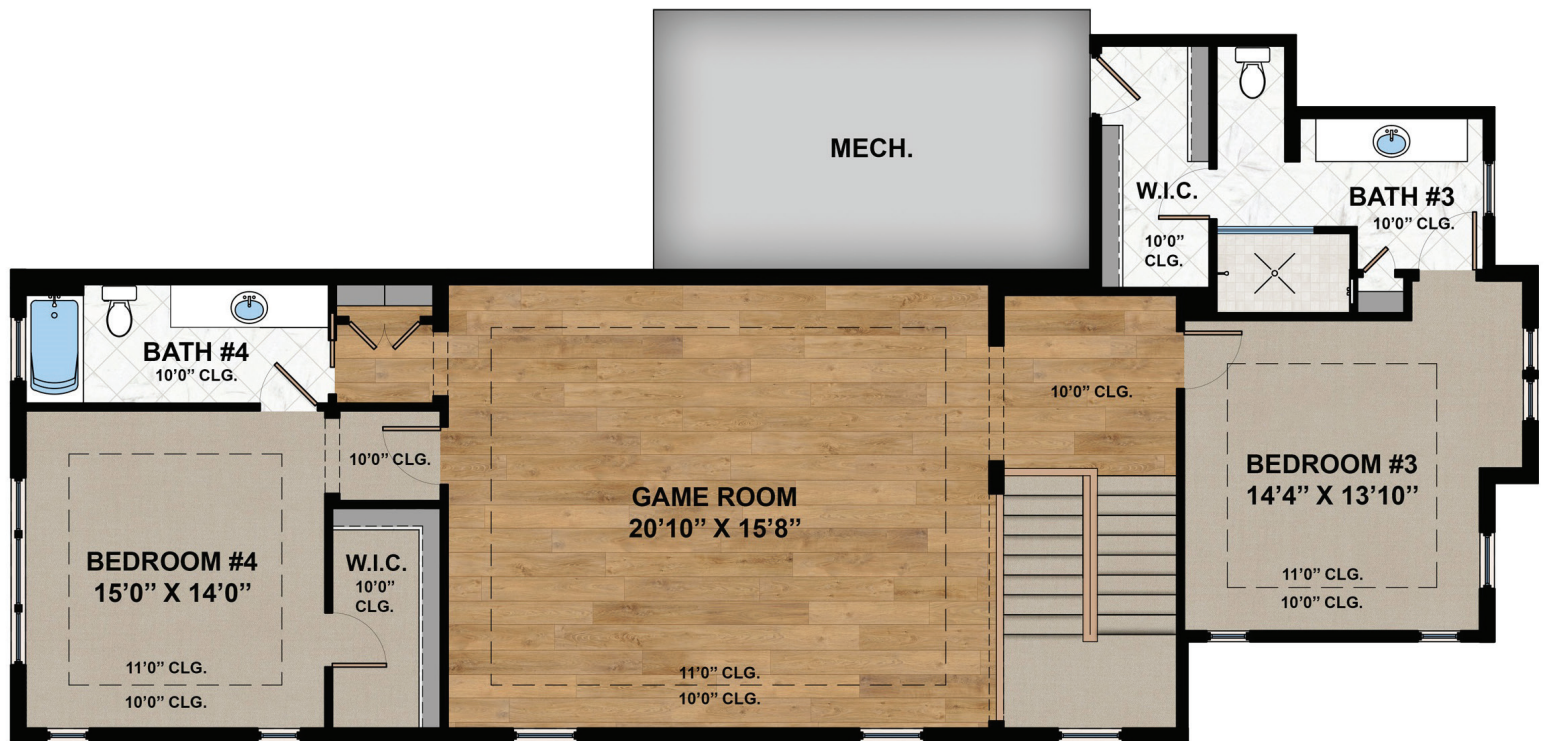
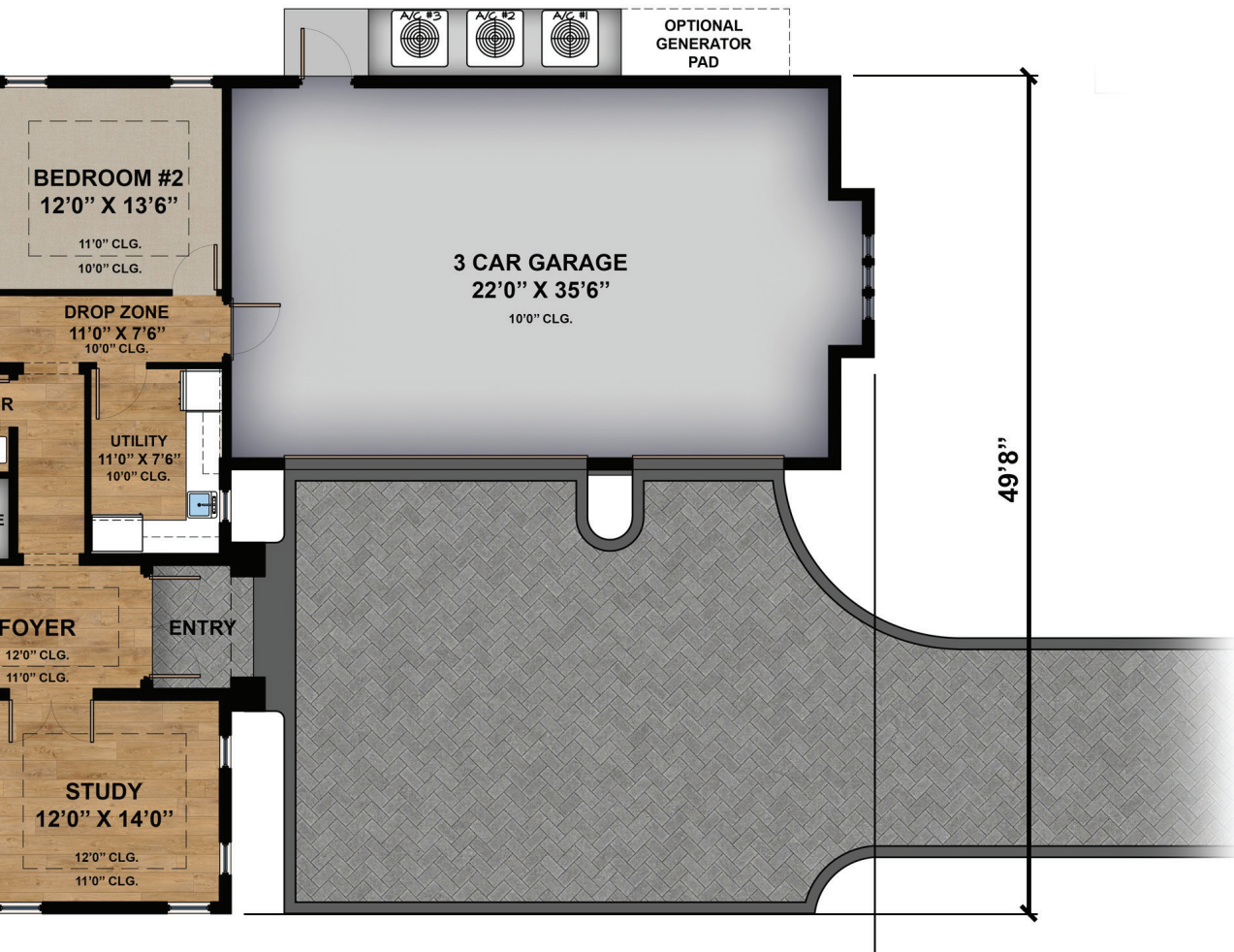
117' 9" x 49' 8"

## Model Features

Elevation: Two Story  
 Bedrooms: 4 Plus Study  
 Baths: 4 Full | 1 Half  
 Garage: 3 Car  
 Designed By:  
 JMDG Architecture



# The Coronado Model



\*Room sizes are subject to change. Optional features may be shown in artist renderings. 3/1/23